



2020 SPRING ROAD RESTRICTIONS

CITY STREETS – RESIDENTIAL AND COMMERCIAL

ALL CITY STREETS ARE 5 TON UNLESS POSTED

7 Ton Streets

Edgewood Street posted 7 ton

3rd Street posted 7 ton

Bradley Boulevard posted 7 ton

9 Ton Streets

Hancock Street from Central Avenue (CSAH 24) to Sherburne Ave (CSAH 23) posted 9 ton

Rolling Ridge Road posted 9 ton

Bank Street posted 9 ton

Sherburne Avenue (CSAH 23) posted 9 ton

97th Street from Autumn Ridge to Sherburne Ave (CSAH 23) posted 9 ton

10 Ton Streets

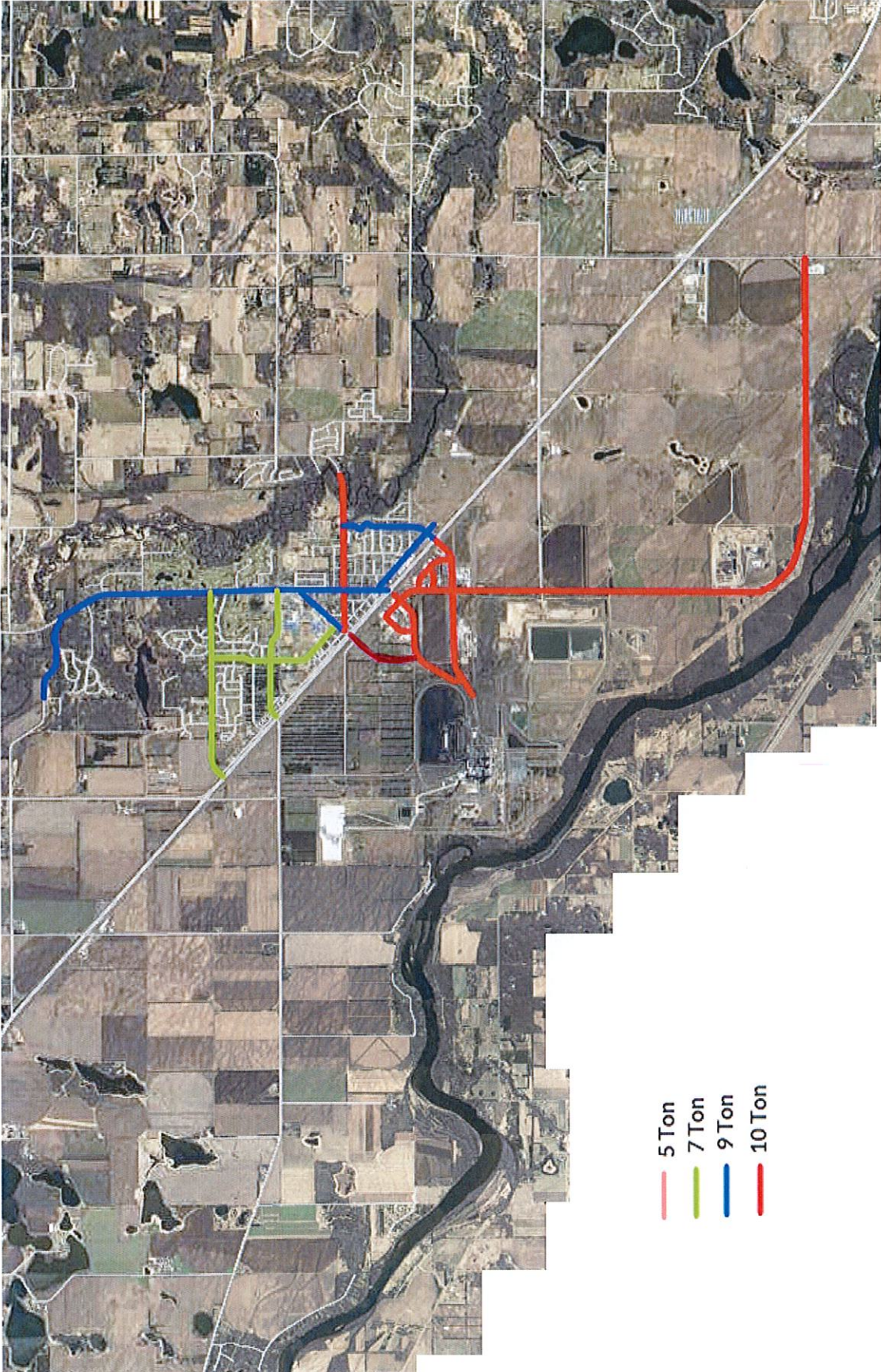
Central Avenue (CSAH 24)

INDUSTRIAL PARK

All Streets in the Industrial Park are posted 10 ton

THE STARTING DATE FOR SPRING LOAD RESTRICTIONS IN THE CENTRAL FROST ZONE IS MARCH 9, 2020 AT
12:01 AM.





- 5 Ton
- 7 Ton
- 9 Ton
- 10 Ton