



## **2019 SPRING ROAD RESTRICTIONS**

### **CITY STREETS – RESIDENTIAL AND COMMERCIAL**

**ALL CITY STREETS ARE 5 TON UNLESS POSTED**

#### **7 Ton Streets**

Edgewood Street posted 7 ton

3<sup>rd</sup> Street posted 7 ton

Bradley Boulevard posted 7 ton

#### **9 Ton Streets**

Hancock Street from Central Avenue (CSAH 24) to Sherburne Ave (CSAH 23) posted 9 ton

Rolling Ridge Road posted 9 ton

Bank Street posted 9 ton

Sherburne Avenue (CSAH 23) posted 9 ton

97<sup>th</sup> Street from Autumn Ridge to Sherburne Ave (CSAH 23) posted 9 ton

#### **10 Ton Streets**

Central Avenue (CSAH 24)

### **INDUSTRIAL PARK**

All Streets in the Industrial Park are posted 10 ton except for

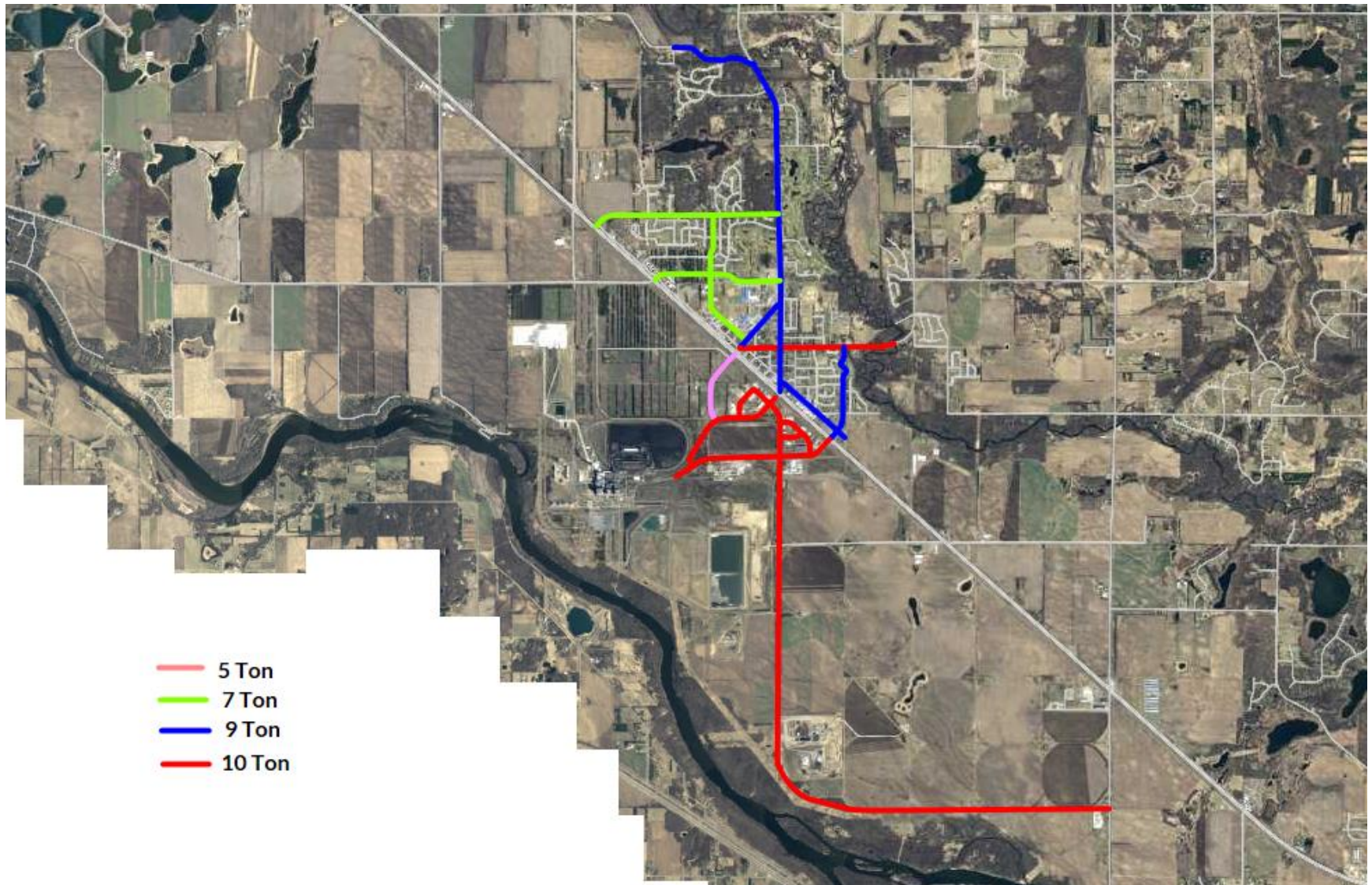
Hancock South (gravel) which is posted 10 ton.

**THE STARTING DATE FOR SPRING LOAD RESTRICTIONS IN THE CENTRAL FROST ZONE IS MARCH 19, 2019 AT  
12:01 AM.**



**SEE ATTACHED MAP**

**2019 SPRING ROAD RESTRICTIONS-TONS PER AXLE**



- 5 Ton
- 7 Ton
- 9 Ton
- 10 Ton